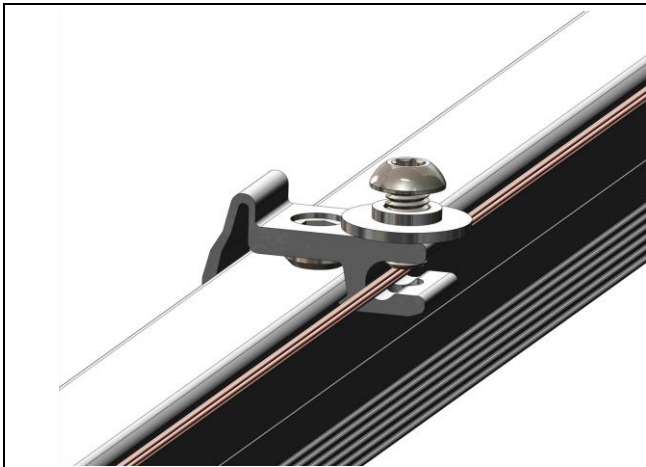


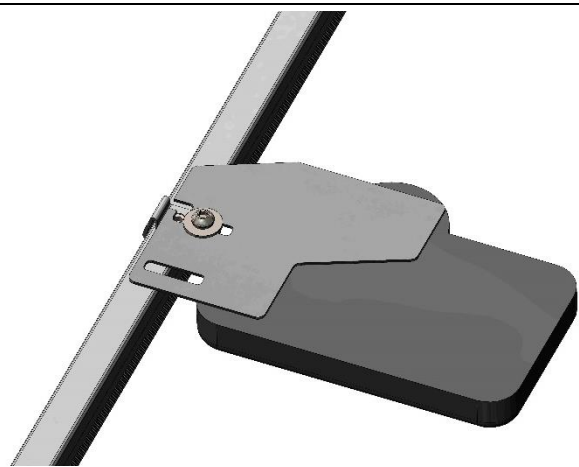


Grounding Lug, with Microinverter Attachment

Assembly

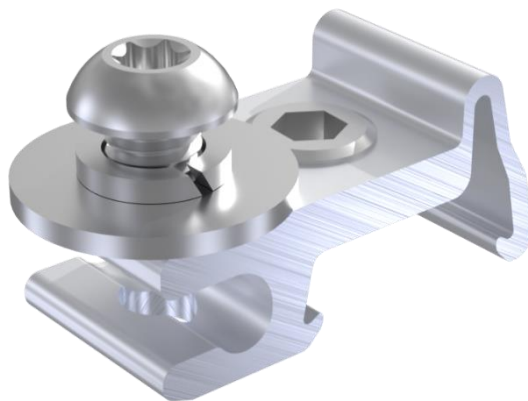


Install as a grounding lug



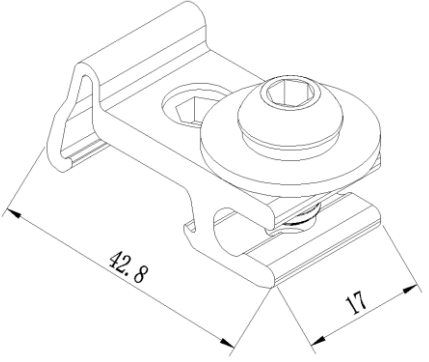
Install as a microinverter attachment

Component



Grounding Lug, with Microinverter Attachment
Part No.: R2-GL-M (bar code: 10-007-01088)

Technical Specification

Application	Grounding Lug for BT Rail of R2; Bracket for Microinverter	
Max Cable Size	25 mm ²	
Dimensions	L42.8mm*W20mm	
Weight	0.033 kg	
Packaging	8 pcs per bag, 50 bags (400 pcs) per carton	
Material	Bolt/Washer: SUS304 Lug: AL6005-T5	
Standard	AS NZS1170.2-2021	